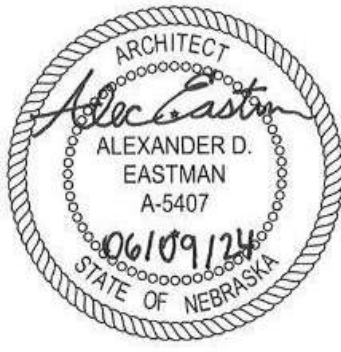


COORDINATING PROFESSIONAL

I, ALEXANDER EASTMAN, AM THE COORDINATING PROFESSIONAL ON THE OPS MILLS ELECTRICAL SERVICE REPLACEMENT PROJECT.



PROJECT TEAM

OWNER: Omaha Public Schools  
4041 North 72nd Street  
Omaha, NE 68134-4470  
Phone: (402) 299-0180

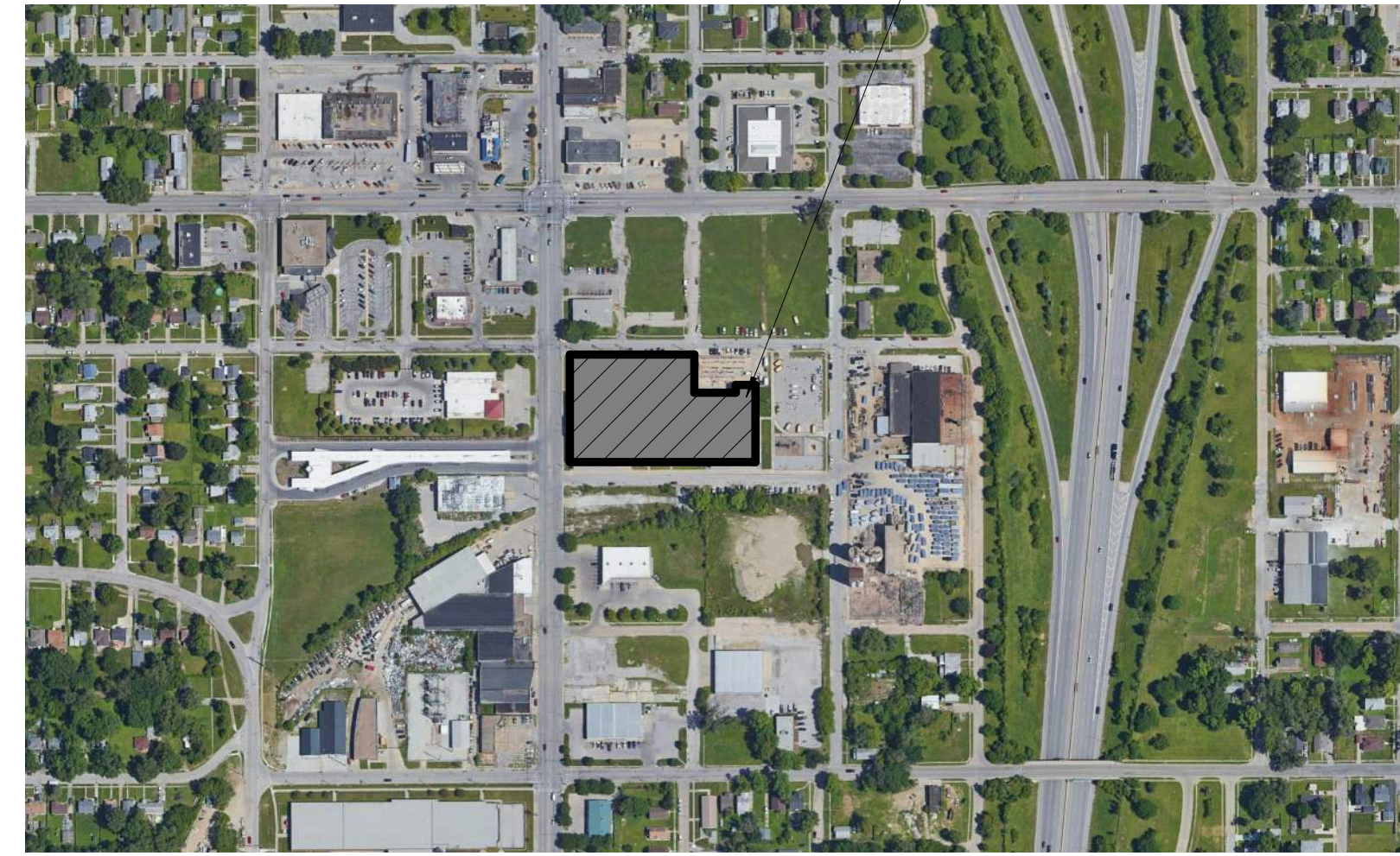
ARCHITECT: BCDM Architects  
1015 North 98th Street, Suite 300  
Omaha, NE 68114  
Phone: (402) 391-2211  
Fax: (402) 391-8721

ELECTRICAL ENGINEER: Morrissey Engineering  
4940 North 118th Street  
Omaha, NE 68146  
Phone: (402) 491-4144  
Fax: (402) 491-4146

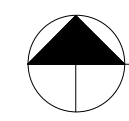
CODES:

2018 International Building Code  
2018 Omaha Plumbing Code and Chapter 49 Omaha Municipal Code  
2012 International Mechanical Code and Chapter 40 Omaha Municipal Code  
2018 International Existing Building Code  
2017 National Electrical Code  
2012 Life Safety Code and 2012 International Fire Code  
2018 International Energy Conservation Code  
2010 ADA Standards for Accessible Design  
Nebraska Accessibility Guidelines (NAG)

PROJECT ADDRESS:  
4311 N 30TH STREET OMAHA, NE 68111



PROJECT LOCATION



VICINITY MAP

NOT TO SCALE

SELECTIVE DEMOLITION

SEE FLOOR PLAN GENERAL NOTES FOR ADDITIONAL INFORMATION



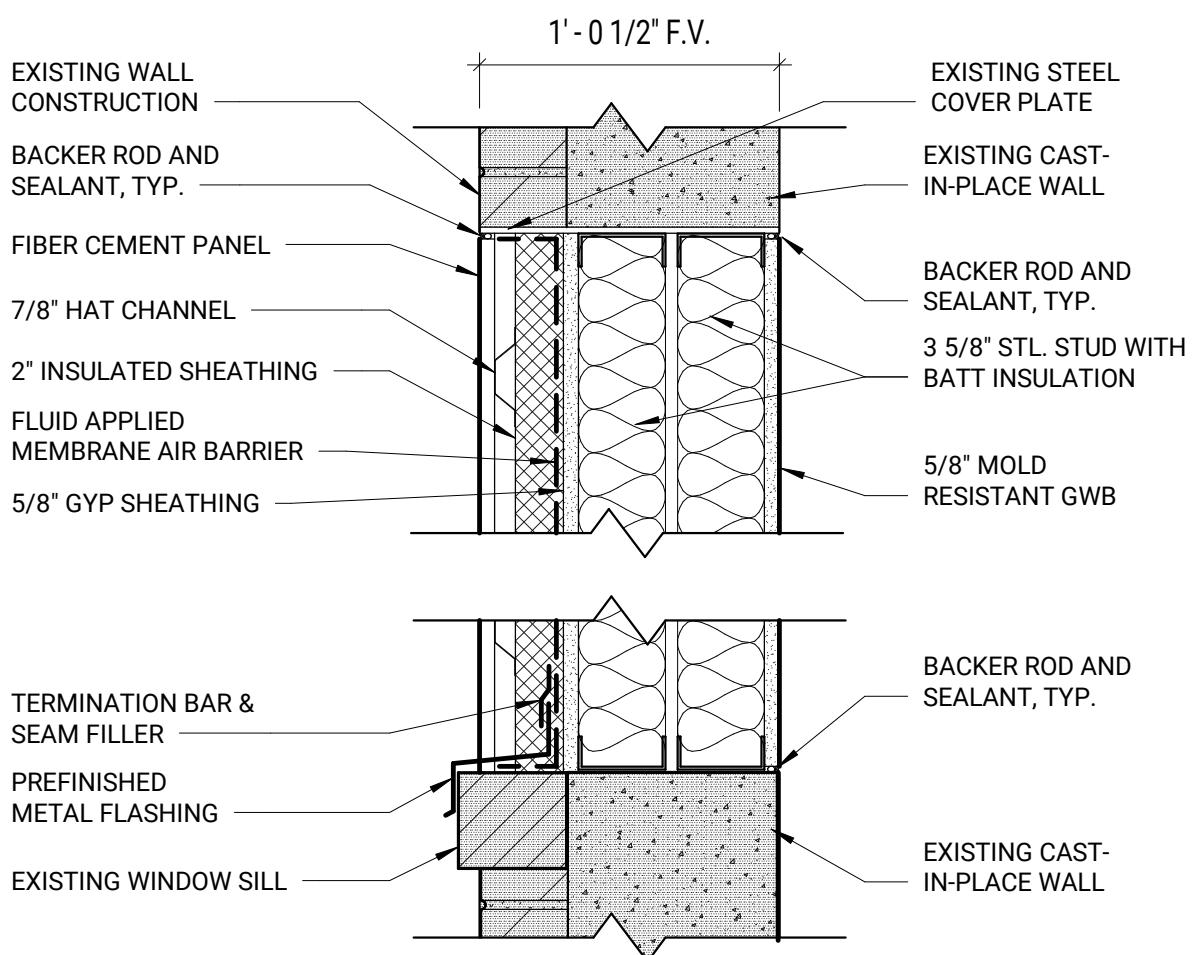
FLOOR PLAN GENERAL NOTES

- ALL ITEMS HIGHLIGHTED IN RED IN THE SELECTIVE DEMOLITION PHOTOS ARE TO BE DEMOLISHED AND REMOVED BY THE CONTRACTOR. SEE FLOOR PLAN FOR ADDITIONAL INFORMATION REGARDING OPENING INFILLS.
- ALL ANGLES ON PLAN ARE 90 DEGREES OR 45 DEGREES UNLESS NOTED OTHERWISE.

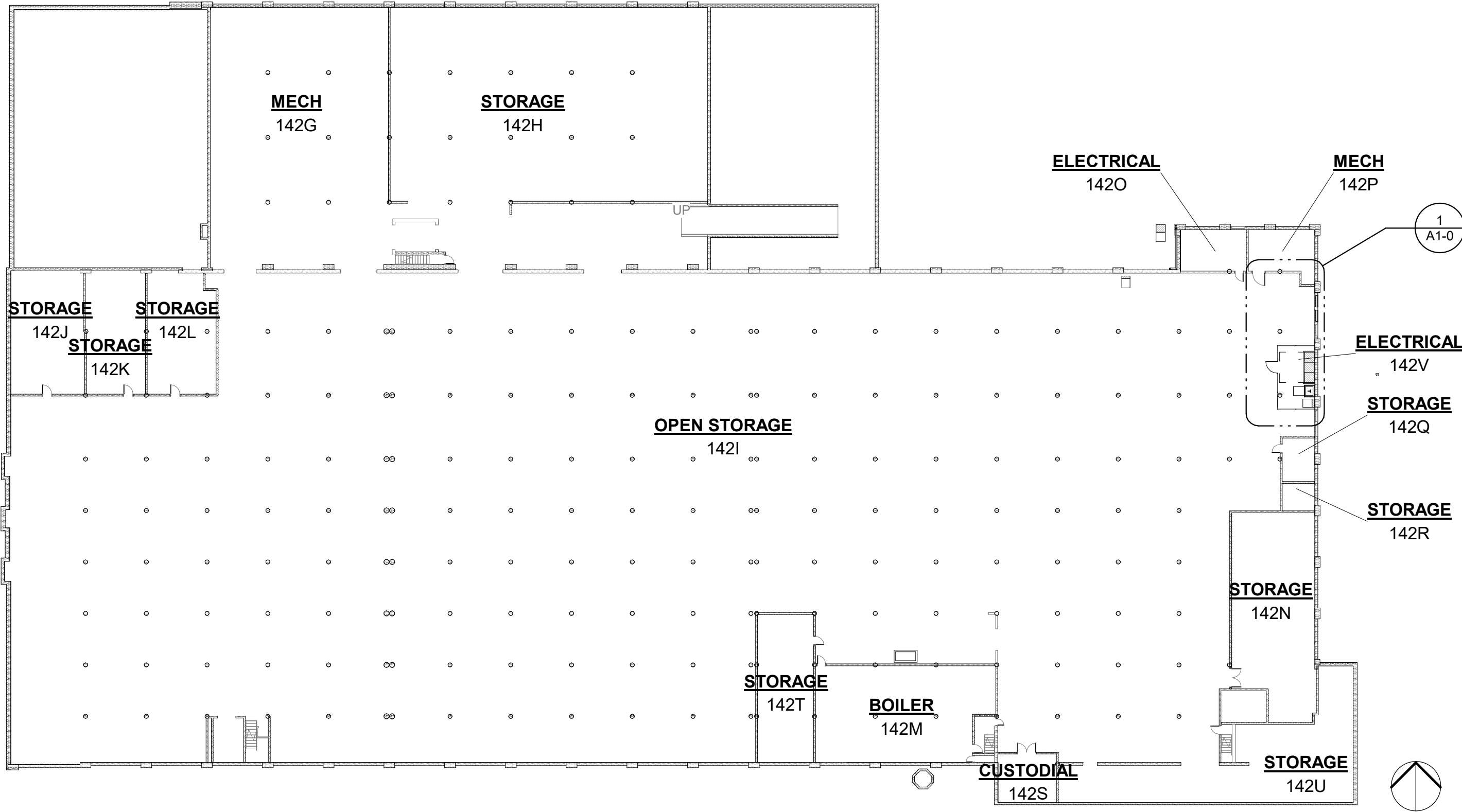
ARCHITECTURAL FLAG NOTES

FLAG NOTES APPLICABLE TO SHEET A1-0

- REMOVE WINDOW FRAME AND ASSOCIATED GLAZING IN ITS ENTIRETY. PREP OPENING FOR INFILL.
- METAL CHAIN LINK FENCING, SEE SPEC SECTION 32 31 13.
- METAL CHAIN LINK DOOR, SEE SPEC SECTION 32 31 13.



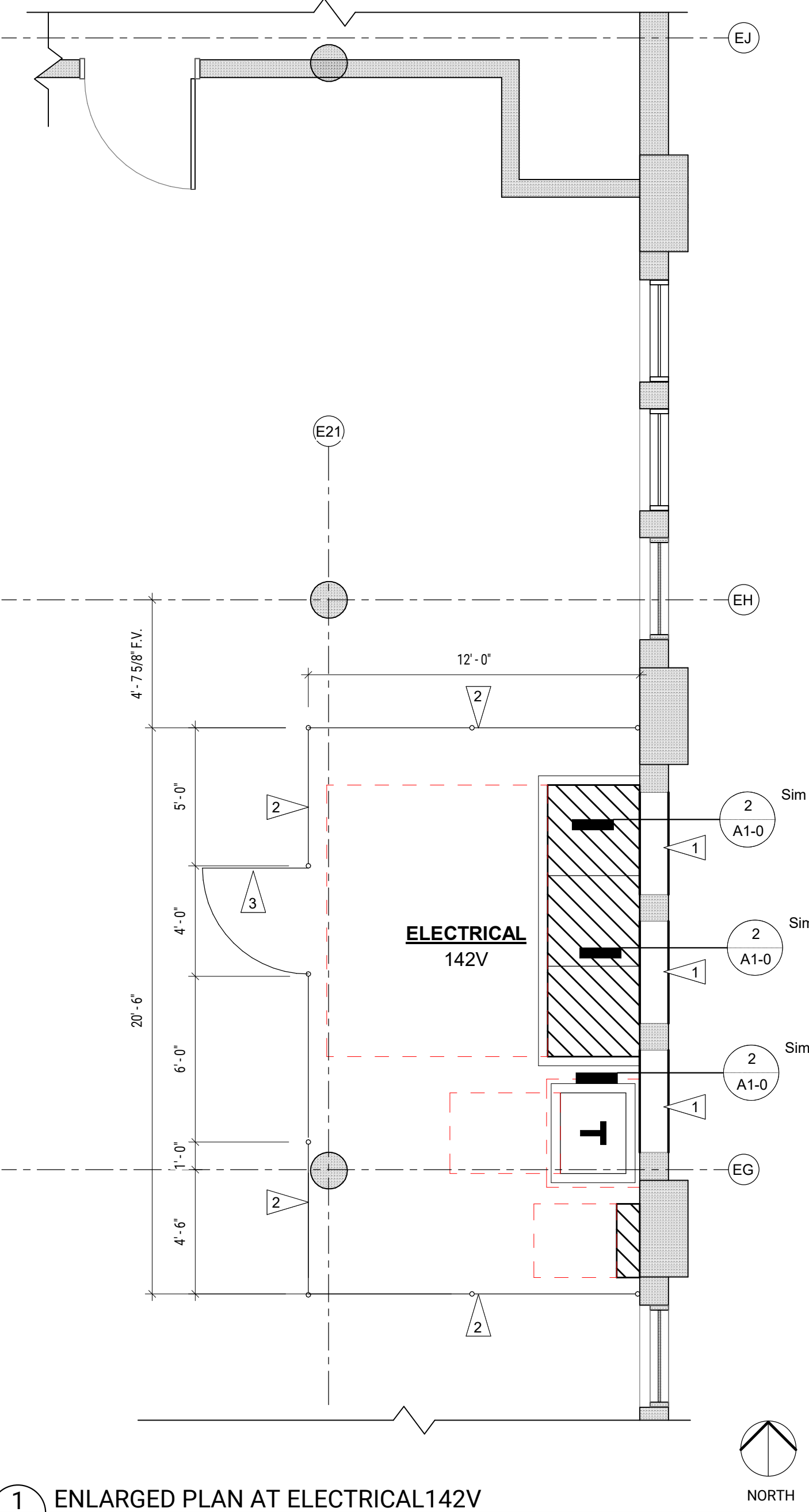
2 SECTION DETAIL AT EXTERIOR WINDOW  
1 1/2" = 1'-0" 0' 1' 8" 1'-4"



3 COMPOSITE BASEMENT FLOOR PLAN  
1/32" = 1'-0" 0' 1' 32'-0" 64'-0"

ROOM FINISH SCHEDULE - ELECTRICAL SERVICE REPLACEMENT									
ROOM NO.	NAME	FLOOR	BASE	WALLS				CEILING MATERIAL	REMARK
				NORTH	EAST	SOUTH	WEST		
142V	ELECTRICAL	EXISTING	---	---	*P-1	---	---	EXISTING EXP. STR	*REMARK 1

ROOM FINISH SCHEDULE REMARKS	
1.	PAINT GWB OF WINDOW INFILL ONLY.



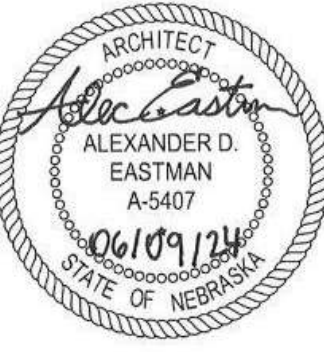
1 ENLARGED PLAN AT ELECTRICAL 142V  
1/4" = 1'-0" 0' 1' 4' 8"



PROJECT TEAM

ARCHITECTURE + INTERIORS  
BCDM ARCHITECTS  
1015 North 98th Street, Suite 300  
Omaha, NE 68114  
CA Number: CA-0271

MECHANICAL + ELECTRICAL ENGINEER  
MORRISSEY ENGINEERING  
4940 North 118th Street  
Omaha, NE 68146  
CA Number: CA-0835



#	ADDENDUM 01	05/20/2025
Description	Date	

OPS MILLS ELECTRICAL SERVICE REPLACEMENT

4311 N 30TH STREET  
OMAHA, NE 68111

OMAHA PUBLIC SCHOOLS

BASEMENT FLOOR PLAN

A1-0

CONSTRUCTION DOCUMENTS  
BCDM NO. 5444-02  
09 JUNE 2024



LEFT BINDING EDGE

5/20/2025 2:03:04 PM

KEYNOTES

- E105 PROVIDE LITHONIA 'CSS 1/8" AL04 MVOLT 40K 80CR1 IE7WCP' LIGHT FIXTURE. CONNECT TO EXISTING BASEMENT LIGHTING CIRCUIT AND SWITCHING.
- E106 CONNECT RECEPTACLE TO NEAREST CONVENIENCE RECEPTACLE CIRCUIT.
- E511 REMOVE CONDUITS/FEEDERS TO OVERHEAD TAP BOX. OVERHEAD TAP BOX AND DISTRIBUTION BLOCKS, AND CONDUIT/FEEDERS TO FUSED DISCONNECTS.
- E512 REMOVE FUSED DISCONNECTS AND TURN OVER TO OWNER. REMOVE CONDUITS/FEEDERS FROM DISCONNECTS TO OVERHEAD JUNCTION BOX ON CEILING LOCATED APPROXIMATELY IN FRONT OF NEW SWITCHBOARD LOCATION. USE EXISTING SPLICE BOX TO REFEED PANEL HPP, XFMR T-PP1, RTU-1, AND AC-1.

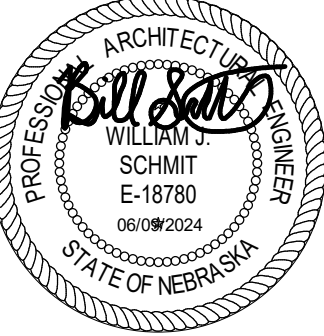


PROJECT

TEAM  
ARCHITECTURE + INTERIORS  
BCDM ARCHITECTS  
1015 North 98th Street, Suite 300  
Omaha, NE 68114

MECHANICAL + ELECTRICAL  
ENGINEER

MORRISSEY ENGINEERING  
4940 North 118th Street  
Omaha, NE 68146  
CA Number: CA-0835



22	Addendum 01	05/20/2025
#	Description	Date

OPS MILLS  
ELECTRICAL  
SERVICE  
REPLACEMENT

4311 N 30TH STREET  
OMAHA, NE 68111

OMAHA PUBLIC  
SCHOOLS

ELECTRICAL PLANS

ES1-0

CONSTRUCTION DOCUMENTS  
BCDM NO. 5444-00  
09 JUNE 2024

2 BASEMENT - POWER PLAN  
1/4" = 1'-0"

1 BASEMENT - DEMOLITION PLAN  
1/4" = 1'-0"

KEY PLAN

**MEI** morrissey engineering inc.  
mechanical | electrical | lighting | technology | commissioning  
4940 North 118th Street  
Omaha, NE 68164  
P: 402.491.4144  
Nebraska COA Number: CA-0835  
www.morrisseyengineering.com

© copyright permission to reproduce all or part of this drawing is hereby granted solely for the limited purpose of construction of this project or archiving. unauthorized copying, disclosure or construction use without written permission of morrissey engineering, inc. is prohibited by copyright law.

note: do not scale drawings. verify all dimensions and clearances from architectural, structural, shop and other appropriate drawings or at site. lay out and coordinate all work prior to installation to provide clearances required for operation, maintenance, and codes and verify non-interference with other work. do not fabricate prior to verification of clearance for all trades.

DRY-TYPE TRANSFORMER SCHEDULE - SERVICE REPLACEMENT							
MARK	TRANSFORMER TYPE	KVA	VOLTAGE		MOUNTING	GROUNDING ELECTRODE	REMARKS
			PRIMARY	SECONDARY			
TAMPD	GENERAL PURPOSE	225 KVA	480 V	208Y/120V	FLOOR	#3@1'C	

DISTRIBUTION PANEL SCHEDULE

<b>Panel:</b> MDP <b>Remarks:</b> MAIN CKT. BKR. W/GND. BAR <b>Options:</b>	<b>Rating:</b> 800 A <b>Volts:</b> 120/208 <b>Phas.:</b> 3 <b>Wires:</b> 4	<b>A.I.C. Rating:</b> 10000  <b>S.E. Rated:</b> NO	
CKT	NAMEPLATE DESIGNATION	RATING	FEEDERS
1	WEST X BSMT LTG SW	200 A	3 3#3/0, #6G-2"C
2	EAST WALL BSMT LTG	200 A	3 3#3/0, #6G-2"C
3	NEW LINE OFFICE LTG	200 A	3 3#3/0, #6G-2"C
4	UNKNOWN LOAD	200 A	3 3#3/0, #6G-2"C
5	ELEVATOR (NOTE 4)	0 A	3
6	SPARE	200 A	3
7	SPACE	100 A	3
8	SPACE	100 A	3

**Notes:**  
1. THE CURRENT LIMITING PLUG IN THE CIRCUIT BREAKER OR THE BREAKER ITSELF MUST BE THE NEXT LOGICAL SIZE ABOVE THE SERVICE CONDUCTOR SIZE.  
2. A PERMANENT "RED" ENGRAVED PHENOLIC PLATE MUST BE INSTALLED ON OR ABOVE THE MAIN CIRCUIT BREAKER WITH THE FOLLOWING INFORMATION:  
    a. SERVICE SIZE - PER NEC  
    b. ALL PROGRAMMED BREAKER SETTINGS.  
    c. "CAUTION - ANY CHANGES TO THESE SETTINGS COULD BE A POTENTIAL RISK TO LIFE AND PROPERTY."  
3. PROVIDE AN ARC ENERGY REDUCING MAINTENANCE SWITCH FOR EACH CIRCUIT BREAKER FRAME SIZE 120 AMPS AND LARGER.  
4. VERIFY EXISTING FUSE SIZING AND PROVIDE SAME AMPERAGE CIRCUIT BREAKER AND MATCHING FEEDER. PROVIDE SHUNT TRIP BREAKER WITH AUXILIARY CONTACTS WIRED IN PARALLEL WITH THE CONTACTS ON THE HOISTWAY DISCONNECT.

SWITCHBOARD SCHEDULE				
Panel: MSB		Rating: 2000 A		A.I.C. Rating: 35000
Remarks: MAIN CKT. BKR. W/GND. BAR		Volts: 480/277		
Options: WITH INTEGRAL SPD AND OWNER METERING		Phas... 3		
		Wires: 4		S.E. Rated: YES
CKT	NAMEPLATE DESIGNATION	RATING	FEEDERS	
1	TRANSFORMER T-MDP	400 A	3	3#500KCMIL, 3G-3"C
2	AREA A MAIN	400 A	3	4#600KCMIL, #3G-3"C
3	AREA B MAIN (XFMR T-HB1)	400 A	3	4#600KCMIL, #3G-3"C
4	AREA C MAIN	400 A	3	4#600KCMIL, #3G-3"C
5	SPACE	400 A	3	
6	PANEL MA1	200 A	3	4#30, #6G-2"C
7	PANEL MB1	200 A	3	4#30, #6G-2"C
8	PANEL MC1	200 A	3	4#30, #6G-2"C
9	PRINTING AND PUBLISHING T-PP1	175 A	3	3#20, #6G-2"C
10	PANEL HPP	120 A	3	4#30, #6G-2"C
11	RTU-1	100 A	3	3#1, #6G-1-1/2"C
12	BOILER RM MAIN	100 A	3	4#2, #6G-1-1/2"C
13	SPARE	125 A	3	
14	AC-1	100 A	3	3#6, #10G-1"C
15	SPARE	100 A	3	
16	SPACE	100 A	3	
17	SPACE	100 A	3	
<b>Notes:</b> 1. THE CURRENT LIMITING PLUG IN THE CIRCUIT BREAKER OR THE BREAKER ITSELF MUST BE THE NEXT LOGICAL SIZE ABOVE THE SERVICE CONDUCTOR SIZE. 2. A PERMANENT "RED" ENGRAVED PHENOLIC PLATE MUST BE INSTALLED ON OR ABOVE THE MAIN CIRCUIT BREAKER WITH THE FOLLOWING INFORMATION: a. SERVICE SIZE - PER NEC b. ALL PROGRAMMED BREAKER SETTINGS. c. "CAUTION - ANY CHANGES TO THESE SETTINGS COULD BE A POTENTIAL RISK TO LIFE AND PROPERTY." 3. PROVIDE AN ARC ENERGY REDUCING MAINTENANCE SWITCH FOR EACH CIRCUIT BREAKER FRAME SIZE 1200 AMPS AND LARGER. 4. PROVIDE GFCP PROTECTION FOR MAIN CIRCUIT BREAKER.				

KEYNOTES	
E501	PROVIDE JUNCTION BOX/BOXES TO INTERCEPT AND EXTEND EXISTING OVERHEAD CONDUITS AND FEEDERS TO NEW ELECTRICAL EQUIPMENT. LOCATIONS AND QUANTITY OF SPICE BOXES ARE AT THE DISCRETION OF THE CONTRACTOR. SEE PANEL SCHEDULES FOR CONDUIT AND FEEDER SIZES.
E502	PROVIDE 3-1/2 THICK CONCRETE HOUSEKEEPING PAD WITH 3/4" CHAMFER EDGE AROUND ALL SIDS EXCEPT THOSE ABUTTING A WALL.
E511	REMOVE CONDUITS/FEEDERS TO OVERHEAD TAP BOX. OVERHEAD TAP BOX AND DISTRIBUTION BLOCKS, AND CONDUIT/FEEDERS TO FUSED DISCONNECTS.
E512	REMOVE FUSED DISCONNECTS AND TURN OVER TO OWNER. REMOVE CONDUITS/FEEDERS FROM DISCONNECTS TO OVERHEAD JUNCTION BOX ON CONCRETE-ANALOGUE. EXISTING IN FRONT OF NEW HIGH-VOLTAGE BOARD. LOCATION: USE EXISTING SPICE BOX TO REEFEEY PANEL HPP, YMMR T-FP1, RTU-1, AND AC-1.

COPPER FEEDER SCHEDULE	
FEEDER	WIRE AND CONDUIT
30-4	4/10, #10 G - 3/4"
70-3	3/8, #6 GND - 1 1/4"
150-3	3/4, #10 G - 1 1/2"
150-4T	4/10, #6 G - 2"
175-3	3/4, #6 G - 2"
200-4	4/8, #6 G - 2 1/2"
400-3	3-600 KCMIL, #3 G - 3"
400-4T	4-600 KCMIL, #10 G - 4"
600-4	4-400 KCMIL, #1 G IN EACH OF (2) 3 1/2" C
800-4T	4-600 KCMIL, #30 G IN EACH OF (2) 4"
2000-4S	4-500 KCMIL IN EACH OF (6) EXISTING 3 1/2" CONDUIT

